

USDA/APHIS WILDLIFE SERVICES National Wildlife Disease Program WILDLIFE DISEASE SURVEILLANCE AND EMERGENCY RESPONSE SYSTEM

Michael P. Milleson - Wildlife Disease Biologist
USDA/APHIS/WS-Florida
office 352.377.5556 - Michael.P.Milleson@aphis.usda.gov

Safeguarding the health of animals, humans, and ecosystems



Outline

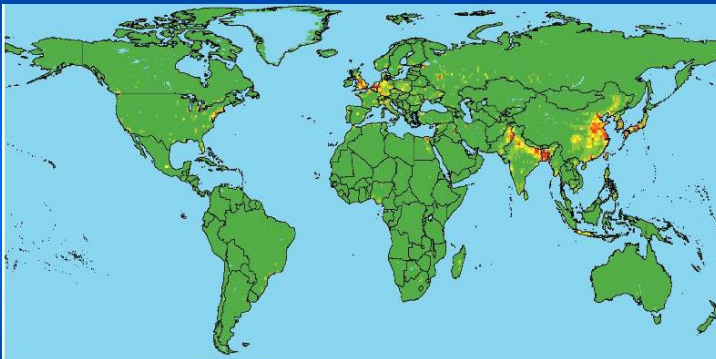
- USDA/APHIS/WS National Wildlife Disease Program Overview
- HPAI surveillance in Florida
- Feral swine disease surveillance in Florida
- Future Challenges

Importance of Wildlife

Over 70 % of human pathogens originate from animals !

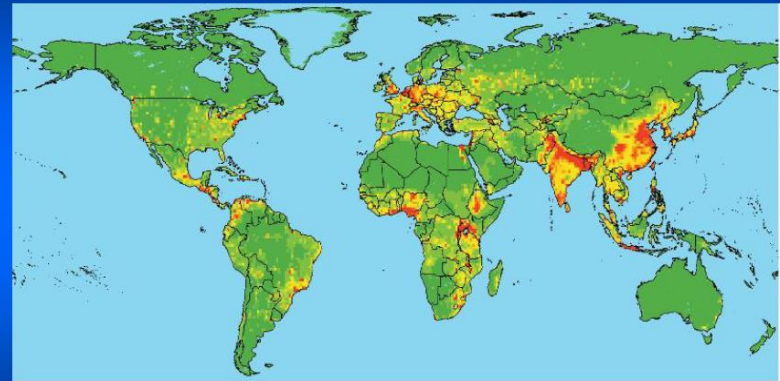
Most of them originate in wildlife

Relative risk EID from zoonotic pathogen from non-wildlife



Jones et al, Nature 21 Feb 2008

Relative risk EID from zoonotic pathogen from wildlife



Jones et al, Nature 21 Feb 2008

USDA/APHIS Wildlife Services National Wildlife Disease Program

APHIS Programs Work Together for National Animal Health

Wildlife Services

- human-wildlife conflict
 - Zoonotic diseases

Veterinary Services

- Domestic Animals



photo by Doug Wean

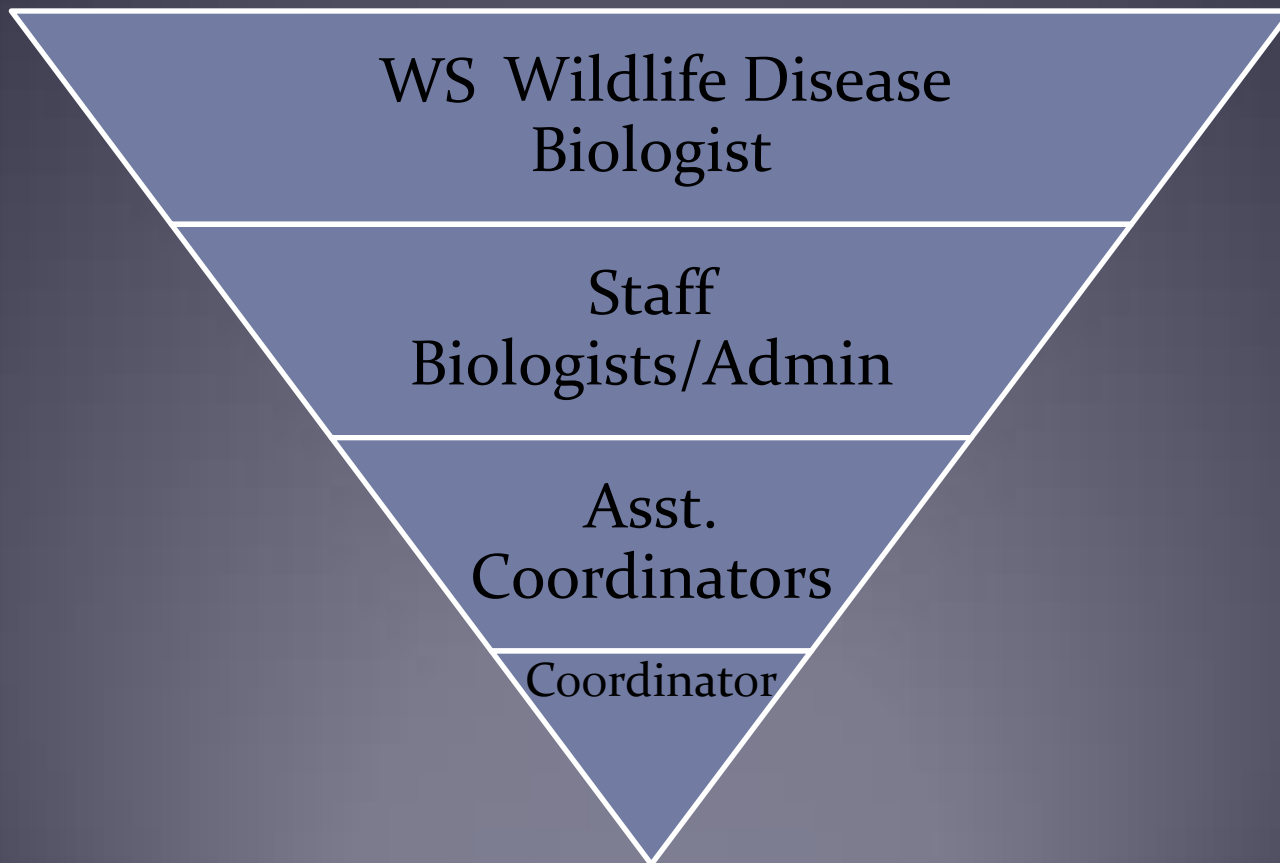
USDA/APHIS/WS

National Wildlife Disease Program

Goal

- To facilitate development and implementation of a nationally coordinated wildlife disease surveillance and emergency response system for the purpose of safeguarding
 - Wildlife populations
 - Agriculture
 - Human health and safety

USDA/APHIS/WS National Wildlife Disease Program



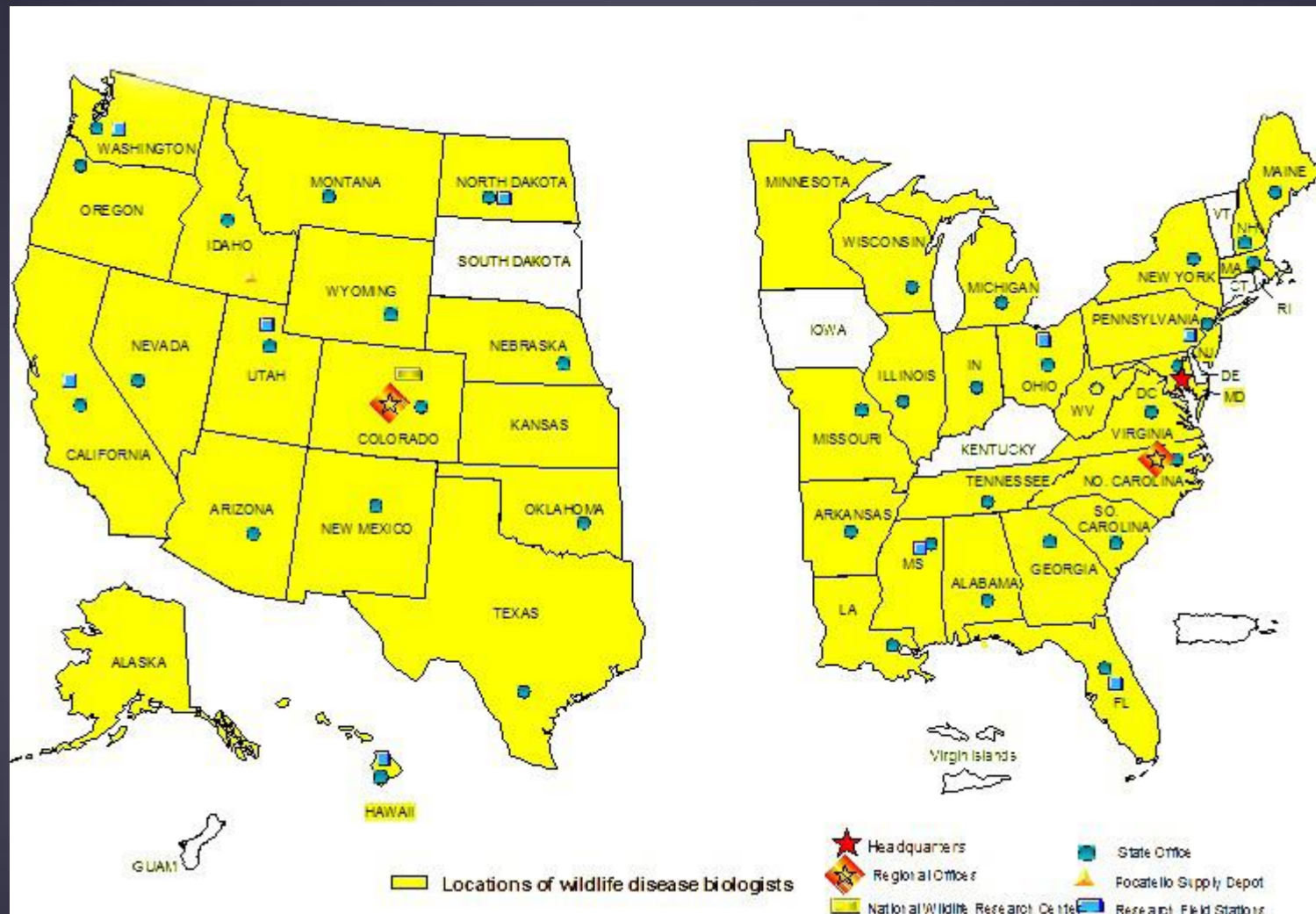
USDA/APHIS/WS

National Wildlife Disease Program

Wildlife Disease Biologist

- **Liaison with:**
 - **Veterinary Services**
 - **State Natural Resources, Agriculture, and Health**
 - **Other State, Tribal, and Federal agencies**
- **Assist these agencies in accomplishing disease surveillance and control objectives**
- **Conduct National level disease surveillance programs**
- **Respond to disease outbreaks and other emergencies**

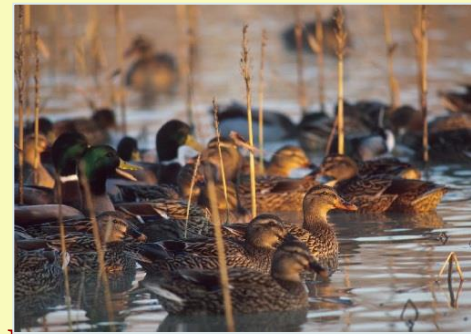
Locations of Wildlife Disease Biologists



NWDP Services Provided

- Coordinate and Implement Wildlife Disease Programs
 - Monitoring and Surveillance Systems
 - Emergency Response Systems
- Work at diverse geographic scales
 - Local
 - Regional
 - National
 - Continental

An Early Detection System for Highly Pathogenic Avian Influenza in Wild Migratory Birds



U.S. Interagency Strategic Plan

NWDP Services Provided

Examples of Monitoring and Surveillance Activities

Plague

HPAI

Chronic wasting disease

E. Coli O157

Classical swine fever

West Nile virus

Japanese Encephalitis

Leptospirosis

Trichinella

Tularemia

Brucella suis

Bovine tuberculosis

Rabies

Pseudorabies

EHD/Blue Tongue

FMD

Toxoplasmosis

Swine Influenza



Emergency Response Services

- Requires:
 - dedicated personnel and equipment,
 - training,
 - interagency communication and cooperation
 - flexibility



Emergency Response Services

- **Activities**

- **Oil Spills**

- Deepwater Horizon
 - Enbridge Pipeline
 - Bayou Perot
 - Delaware River
 - New Orleans

- **Natural Disasters**

- Katrina, Rita, Emily, Ivan, Gustad, etc.
 - Iowa Floods
 - Thailand Tsunami

- **Diseases**

- SD Plague
 - CA E. coli O157
 - Newcastle
 - Bovine TB
 - LPAI/HPAI
 - CWD
 - Rabies

HPAI surveillance in wild birds

Interagency Effort

Morbidity Mortality

Hunter killed

Live Wild birds

Agency Take

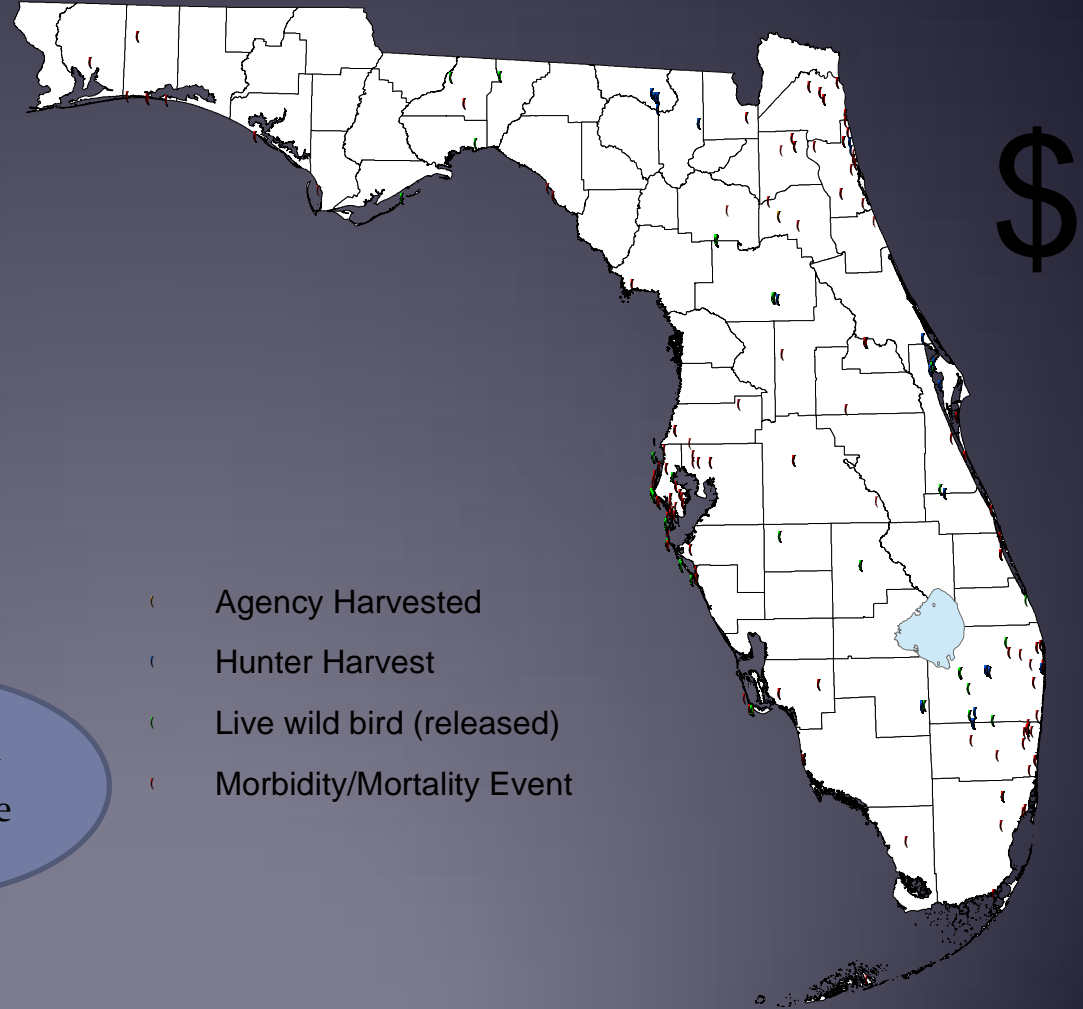


HPAI surveillance in wild birds

2006-2010

5,047 samples

No HPAI



If we hide
maybe they
won't sample
us!

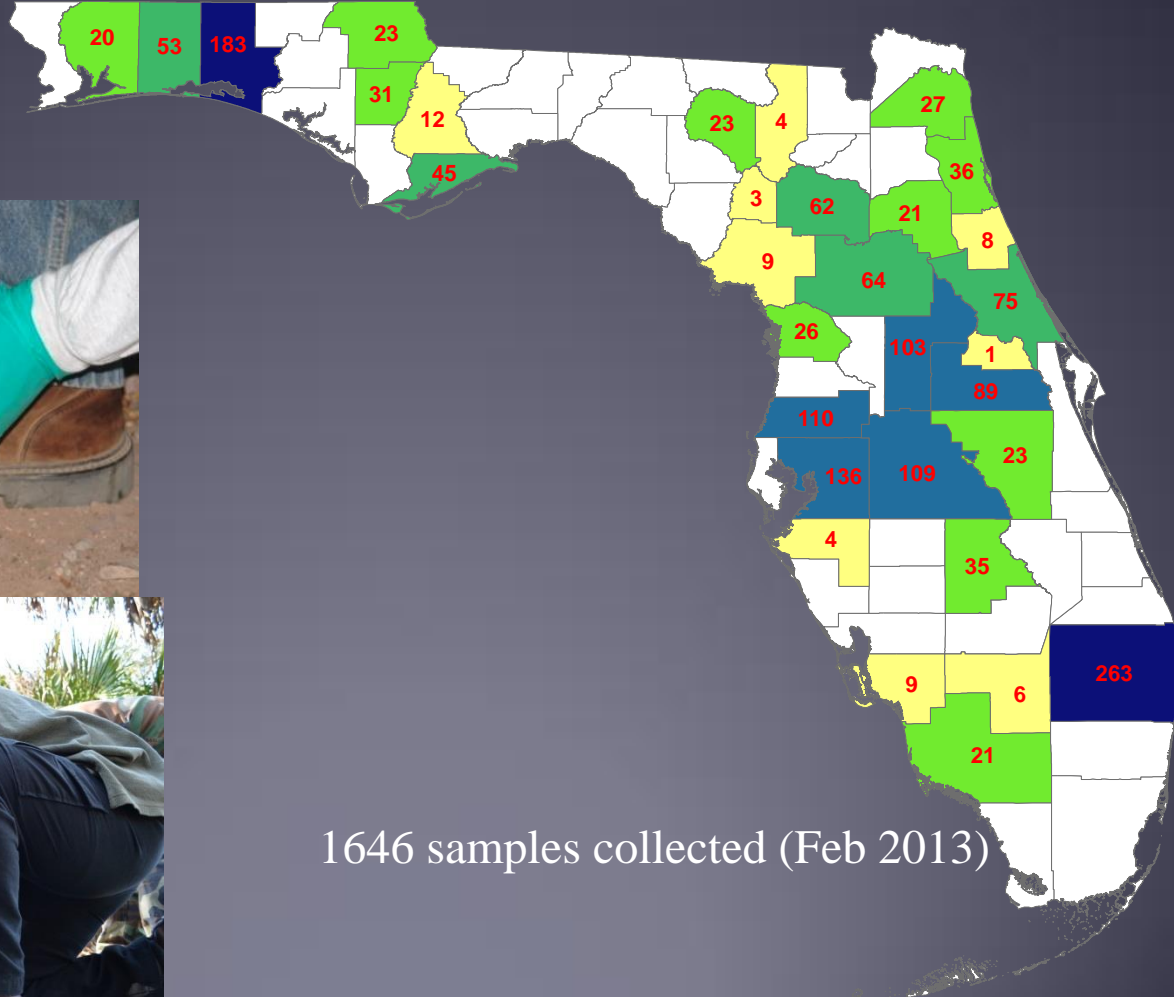
- Agency Harvested
- Hunter Harvest
- Live wild bird (released)
- Morbidity/Mortality Event

Feral Swine Disease Surveillance in Florida



- WS has been collecting surveillance and monitoring of various diseases in feral swine in Florida since 2007.
- Primary sources of funding for this monitoring CSF, SIV
- Other diseases covered: SB, PRV, ASF, FMD, Toxo, Trich, SIV, HEV, PRRS, PCV₂, Lepto

Sample collection 2007-present



1646 samples collected (Feb 2013)



Future Challenges

- Minimal Disease Surveillance in Wildlife
 - Critical in One Health approach to protecting humans and animals
 - Requires investment infrastructure
 - Field biologists and support staff
 - Diagnostic support for wildlife
 - Research Support for modeling and Risk Assessments
 - Data historically limited in geographic and temporal scales
 - Requires Nationally coordinated networks
 - HPAI Wild Bird Early Detection System
 - Sylvatic Plague and Tularemia Monitoring System
 - Feral Swine Comprehensive Disease Surveillance System

Future Challenges

- Much more interdisciplinary integration needed
 - Avoid duplication
 - Build on various partners Strengths
- Constantly Re-inventing the Wheel
 - Surveillance networks need to be flexible
 - Capable of sampling multiple species
 - Capable of sampling for multiple pathogens
 - Often dismantled when perception of risk decreases
 - HPAI

“One Health”

Merging Animal Health and Public Health

